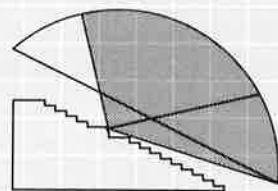


Omnivision



DESCRIPTION

Omnivision is a 70mm, 8 perforation film system that projects onto a hemispherical screen, tilted 20° to 30°, from 40 feet in diameter up to 67 feet in diameter. Unidirectional seating offers wide natural viewing angles up, down, and to both sides. Eighty to eighty-five percent of the dome screen is covered with crisp, bright images full of vibrant, contrasting colors.

Scenic grandeur and six channel sound surrounds Omnivision audiences as horizons and objects sweep by on the massive tilted dome. This staggering visual and aural experience actually requires eye and head movement to take in the entire picture. Viewers get the feeling of "being there".

APPLICATIONS

Omnivision 70mm film presentations can educate and entertain a broad market including adult, family, child, teen, student, resident and tourist. Omnivision has the power to draw year-round at a variety of locations including science parks; museums; planetariums; World's Fairs; expositions; industrial, commercial or institutional trade shows; theme parks; marine parks; sports arenas; stadiums; stage or movie theaters; zoos and other high traffic attractions.

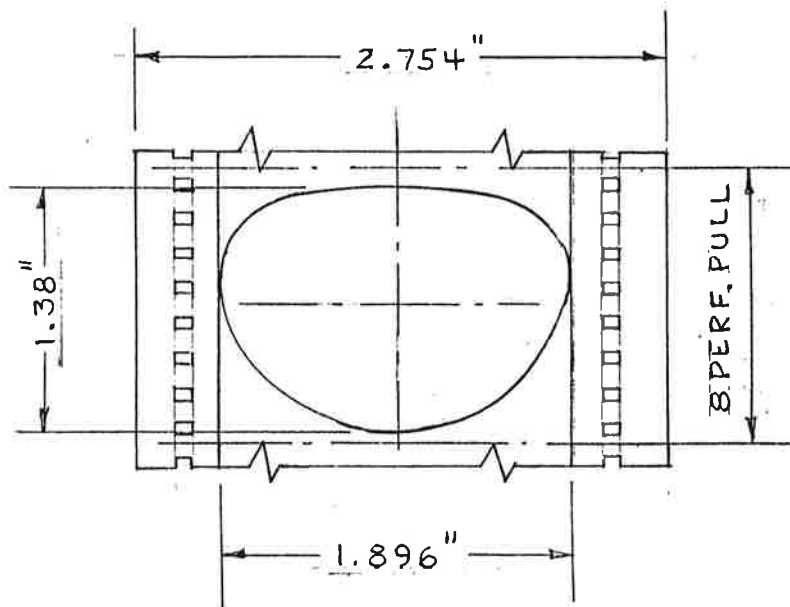


P.O. Box 5807/Sarasota, Florida 34277-5807/U.S.A.
Phone: (813) 924-4239/Telex: 803785/Fax: (813) 924-2643

870 OMNIVISION FILM FORMAT

70mm, 8 Perforation pulldown

Aspect ratio: 1.37/1



OMNIVISION FILM FRAME

PROJECTOR

8 Perforation pull-down
70mm, 24 frames/second
Fixed framing for increased picture stability
Film handling: Film platter, reel-to-reel or continuous loop
as required
Projection Angle: Horizontal 160°
Vertical 112°
Projection Lift (optional): Lift Height - 10 feet (3.05m)
Lifting Capacity - 2000 lbs.(907kg)

LAMPHOUSE

Light source : 7 KW or 12 KW Xenon Projection Lamp
Dichroic folding mirrors
Aluminized metal reflector

PROJECTION LENSES

Spherical multi-element lens designed for maximum coverage of the dome screen.

SOUND

Six Channel Surround, Single or Double Analog Systems available

Channel configuration: CH-1: Left surround
CH-2: Left front
CH-3: Center
CH-4: Right front
CH-5: Right surround
CH-6: Overhead rear

Six channel Teccon head (Sendust) for Single Analog System
Six channel ultra low-noise preamplifier (Omni Films design)
Noise reduction: Dolby or dBX (dBX preferred)
Audio Power: 400 Watts per channel
Bass-boost: dBX subharmonic synthesizer and sub-woofers
Speakers: 15-inch 3-way for all channels
Crossover Network: One per channel

SCREEN

Sizes: From 40'(12.19m) diameter up to 67'(20.42M) diameter
Shape: 160° Hypohemisphere
Tilt Angle: 20°- 30° Typical
Material: Perforated Aluminum with Frame and Component Hardware
Perforation Opening: 22%
Reflectivity: 35-38%

POWER REQUIREMENTS

	<u>7KW Lamphouse</u>	<u>12KW Lamphouse</u>
USA:	9KW; 220Volt; 3-Phase; 60Hz	15KW; 220Volt; 3-Phase; 60Hz
International	9KW; 380Volt; 3-Phase; 50Hz	15KW; 380Volt; 3-Phase; 50Hz

FILM PRINT-OVER/ 1570 to 870

The exclusive 70mm 15 perf/8 perf OMNI FILMS print-over process produces high quality, 8 perforation prints, while preserving full frame integrity.

FILM LIBRARY

An extensive film library of educational, scientific and travelogue type films originally produced in 70mm 15 perforation are now available in 70mm 8 perforation either directly from Omni Films or from other large format film producers. New film productions will continue to expand the library

From Omni Films International, Inc.:

"The Magic Egg
"Faces of Japan"
"Tomorrow in Space"
"Sacred Site"
"Energy Energy"

In Production:

"Serengeti" Omni Films International, Inc.- Producer

OMNIVISION THEATER DESIGN

11/9/88

MODEL

	<u>OV44</u>	<u>OV50</u>	<u>OV55</u>	<u>OV60</u>	<u>OV67</u>
Dome Screen :					
Diameter	44'	50'	55'	60'	67'
Shape	-----160° Hyposphere-----				
Radius	22'	25'	27'6"	30'	33'6"
Angle of Tilt	25°	25°	25°	25°	25°
Material	---Perforated Aluminum w/Frame & Hardware---				
% Perforation	22%	22%	22%	22%	22%
Screen Gain	.35-.38	.35-.38	.35-.38	.35-.38	.35-.38
Height to:					
Front Wall	1'	1.6'	2.5'	4'	4.5'
Highest Point	29.2'	33.6'	37.5'	41.2'	45'
Rear Wall	21'	21.5'	25.7'	28.4'	31'
Theater:					
Diameter	54'	60'	65'	70'	77'
Floor Rake	25°	25°	25°	25°	25°
Overall Height	34.2'	38.6'	42.5'	46.2'	50'
Seating:					
No. Seats	134	175	238	254	314
No. Rows	10	11	12	12	13
Seats/Rows	-----Varies according to line of sight-----				
Seat Width	22"	22"	22"	22"	22"
Row Length	-----Varies according to line of sight-----				
Dist. to 1st Row	12-1/2'	14-1/4'	15-1/2'	17'	19'
Aisles:					
No. Aisles	2	2	2	2	2
Width Each	4'	4'	4'	4'	4'
Location	Side	Side	Side	Side	Side

From Other Large Format Film Producers:

"To FLY"
"Flyers"
"Chronos"
"Darwin on the Galapagos"
"The Great Barrier Reef"
"Seasons"
"Genesis"
"Grand Canyon"
"Niagara"
"Alamo"
"El Pueblo Del Sol"
"Rivers of North America"
"Omni-News II"
"Viva Baja"
"Cosmos"
"Garden Isle"
"Standing Up Country"

CUSTOM FILMS

Custom film production by OMNI FILMS is available to customers who wish to create their own presentations.

The OMNI FILMS 8 perforation cameras with a variety of lenses combine to provide the flexibility required for the most complex scripts. Camera equipment and operating technicians are available on a fee basis for production by independent producers.

	<u>MODEL</u>				
	<u>OV44</u>	<u>OV50</u>	<u>OV55</u>	<u>OV60</u>	<u>OV67</u>
Projection:					
Type	70mm, 8 Perforation Vertical Pulldown, 24 Frames/Second				
Lens to Spring Line	3.81'	4.39'	4.76'	5.19'	5.8'
Lens Type	-----Omnivision 160°/180° F/2-----				
Projection Angle					
Horizontal	160°	160°	160°	160°	160°
Vertical	112°	112°	112°	112°	112°
Lamphouse Wattage	7KW	7KW	7KW	12KW	12KW
Cooling Requirements	-----Forced Air-----			Forced Air & Chilled Water	
	(Approx. 57,000 BTU's)				
Projection Room					
L x W x H	-----10'x10'x9'-----			-----10'x15'x9'-----	
Equipment Room					
L x W x H	N/A	N/A	N/A	-----20'x20'x9'-----	
Projector Lift (Optional)					
Travel Height	10'	10'	10'	10'	10'
Lift Capacity	-----2,000 lbs-----				

Sound:

	-----Single System 6 Channel Analog-----				
Type					
Channels	6	6	6	6	6
Dual Amplifiers	4	4	4	4	4
Watts/Amplifier	800	800	800	800	800
Total Watts	3200	3200	3200	3200	3200
3-Way Speakers	8	8	8	8	8
Size	15"	15"	15"	18"	18"
Sub-Woofers	2	2	2	2	2

Optional:

-----Double System 6 Channel Analog-----

***Electrical Requirements:**

60 Cycle					
Kilowatts	9	9	9	15	15
Volts	220/110	220/110	220/110	220/110	220/110
Phase	3	3	3	3	3
50 Cycle					
Kilowatts	9	9	9	15	15
Volts	380/208	380/208	380/208	380/208	380/208
Phase	3	3	3	3	3

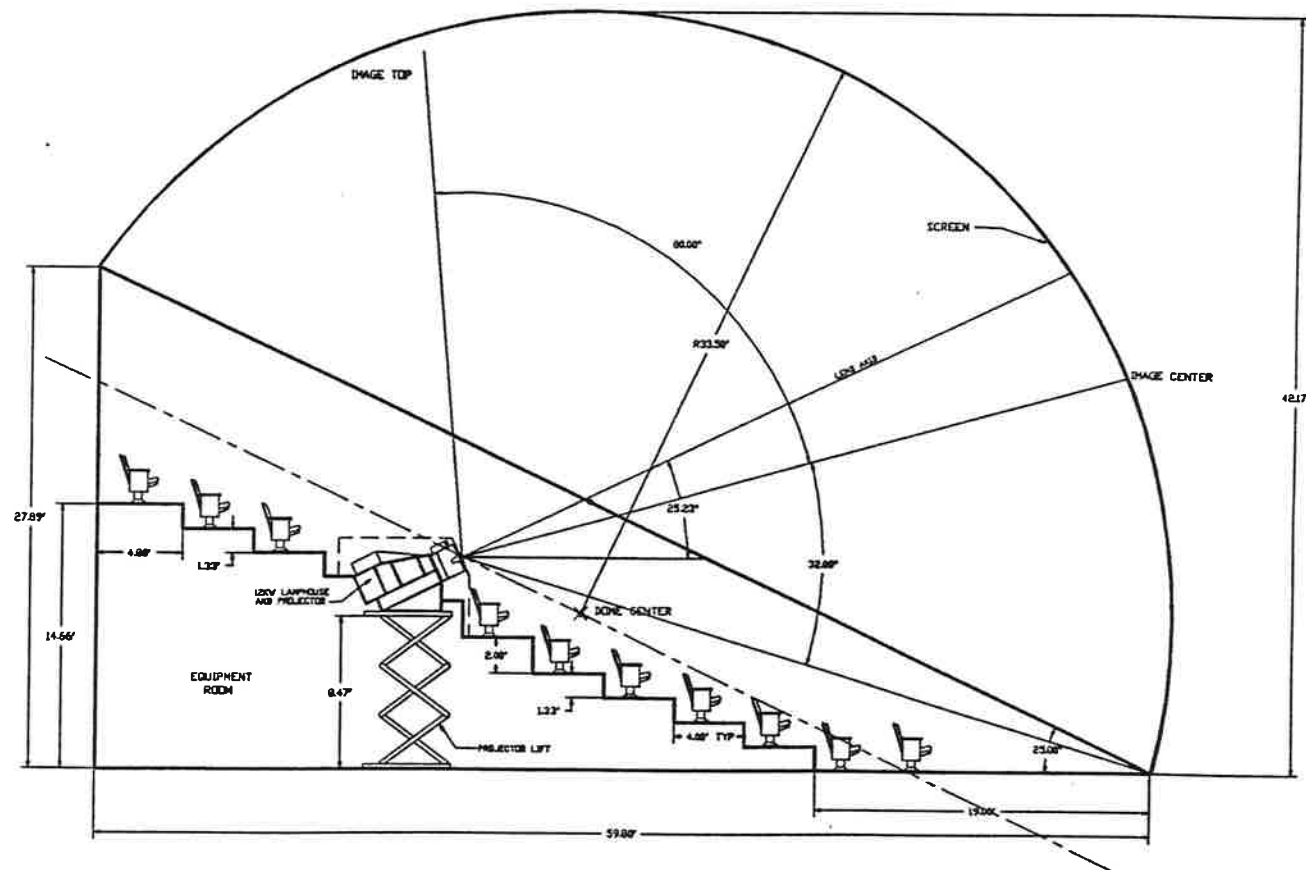
* Any other voltages can be accommodated on request, including but not limited to 440/220.

OMNI FILMS International, Inc.

PRODUCT INFORMATION AND ENGINEERING DATA

"OMNIVISION" TYPICAL 67-FOOT DOME 12KW LAMPHOUSE CAPACITY: 312

SHEET: OV-001-A



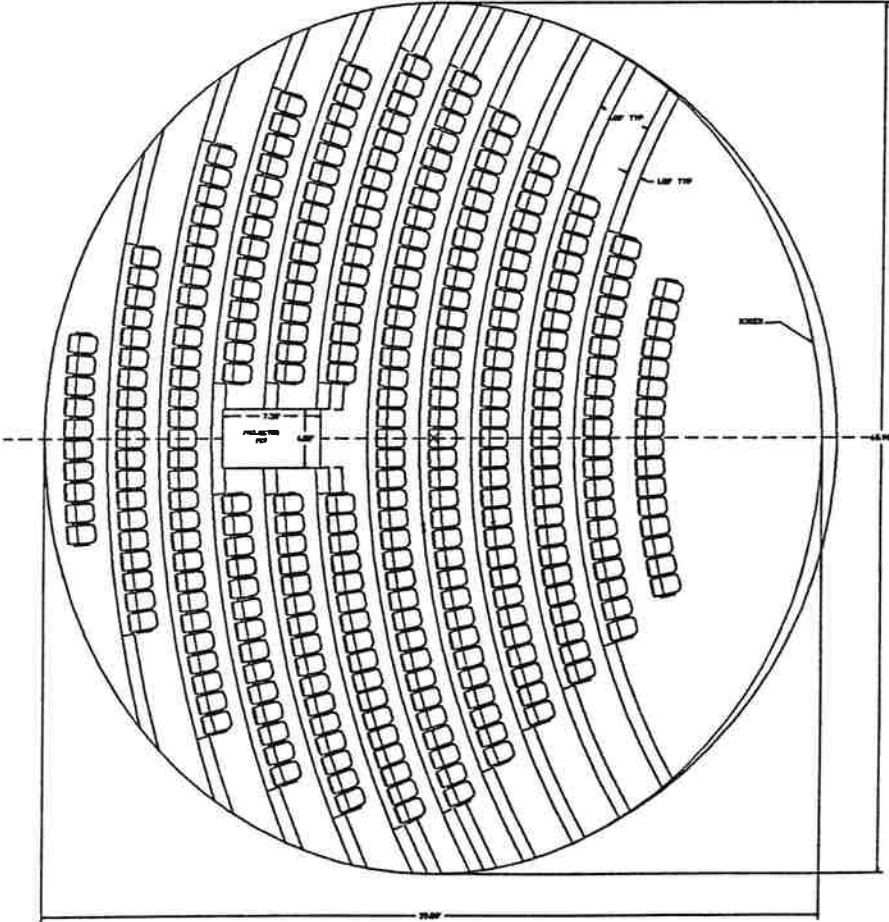
SIDE ELEVATION

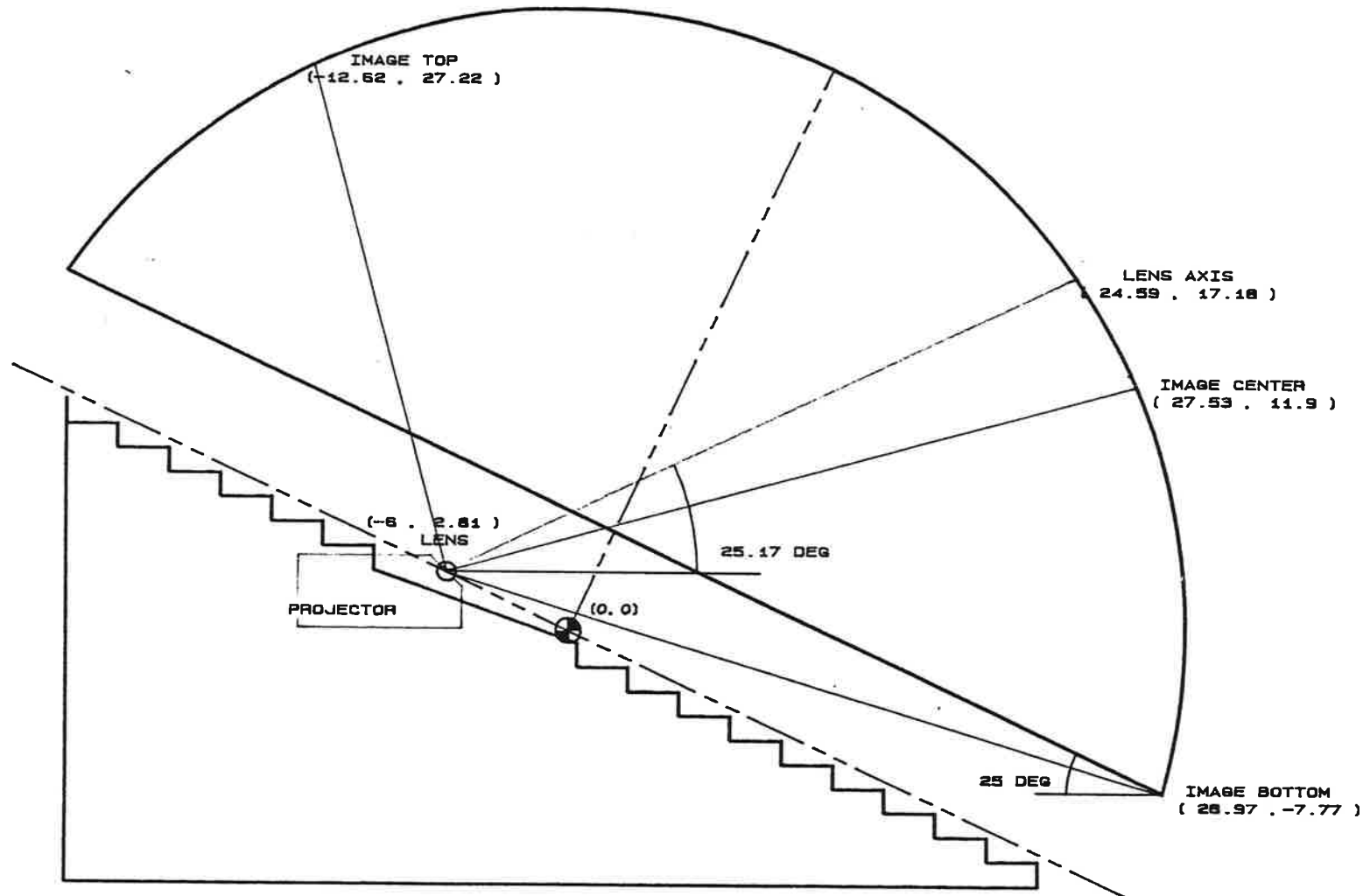
OMNI FILMS
International, Inc.

PRODUCT INFORMATION AND ENGINEERING DATA

"OMNIVISION" TYPICAL 67-FOOT DOME 12KW LAMPHOUSE CAPACITY: 312 -PLAN VIEW-

SHEET: OV-002-A





DOME DIAMETER= 59.08 FT.
 DOME RADIUS= 30 FT.
 LENS-TO-DOME DISTANCE= 5.19 FT.

OMNI FILMS
INTERNATIONAL, INC.

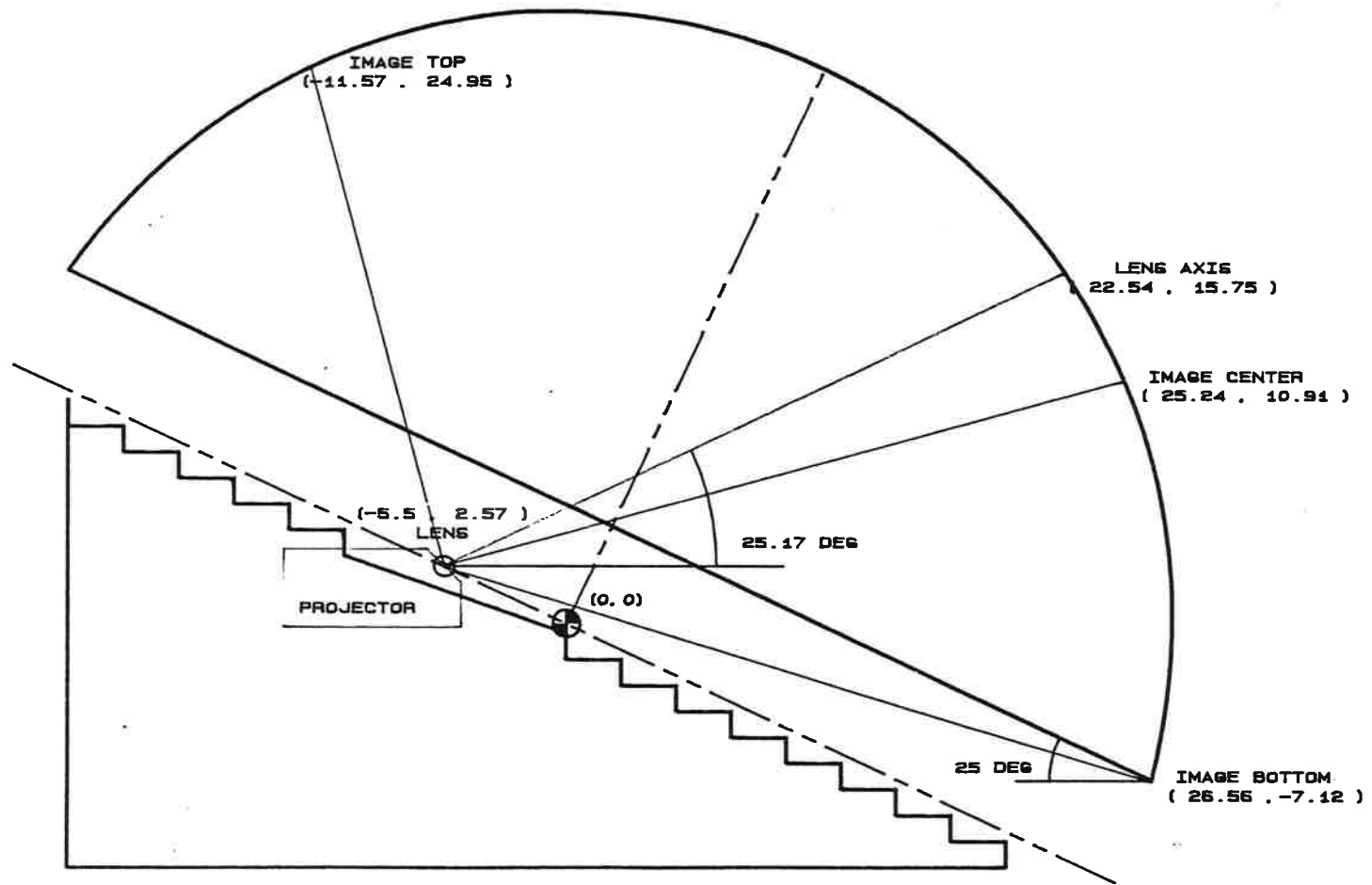
'OMNIVISION' MODEL OV60
 THEATER SYSTEM

SCALE: 1/8"=1
 DR. BY: HP150

DWG.-A0308

10-27-1987

Rev.: A



DOME DIAMETER= 54.16 FT.
 DOME RADIUS= 27.5 FT.
 LENS-TO-DOME DISTANCE= 4.76 FT.

OMNI FILMS
 INTERNATIONAL, INC.

'OMNIVISION' MODEL OV55
 THEATER SYSTEM

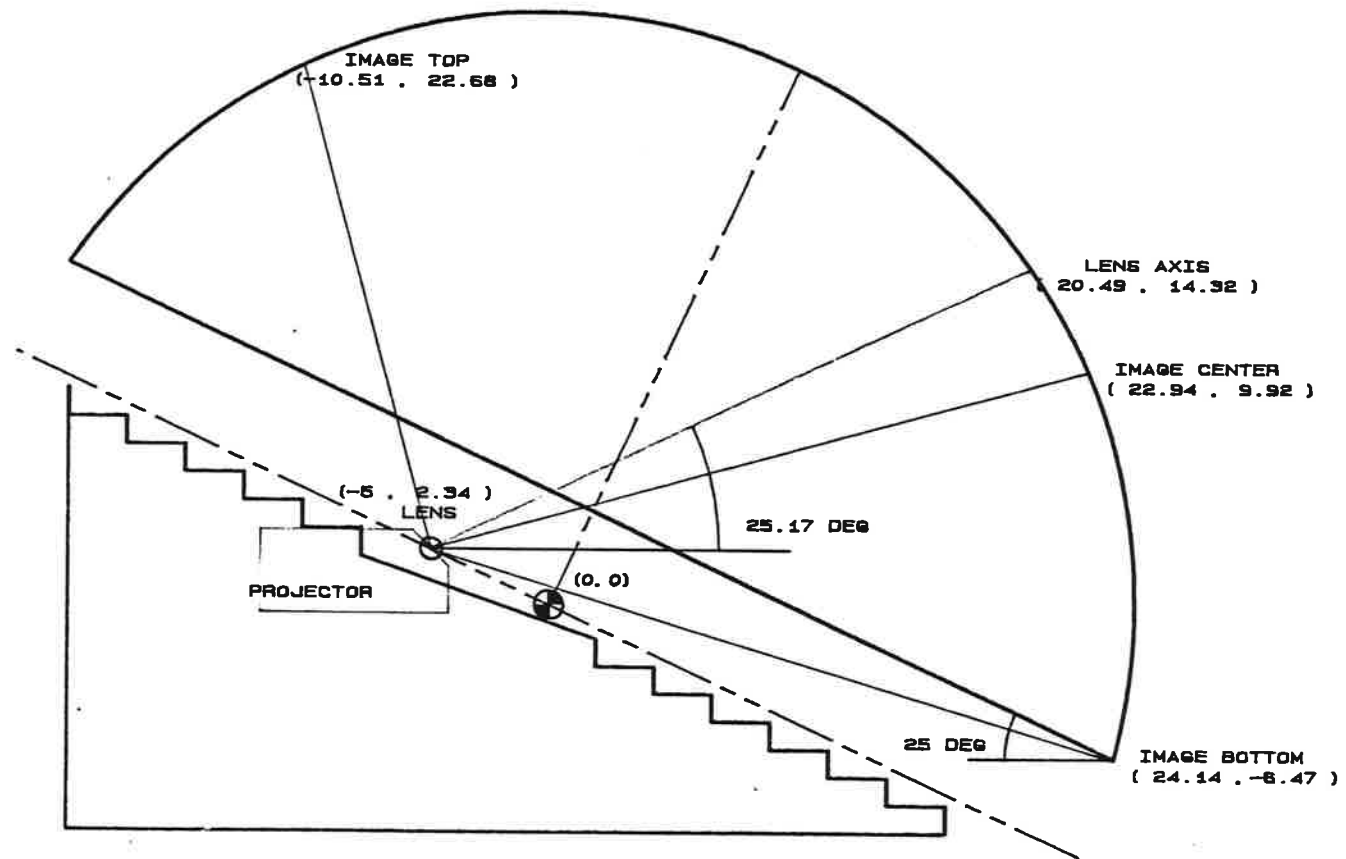
SCALE: 1/8"=1

DR. BY: HP150

DWG.-A0309

10-27-1987

Rev.: A



DOME DIAMETER= 49.24 FT.
 DOME RADIUS= 25 FT.
 LENS-TO-DOME DISTANCE= 4.33 FT.

OMNI FILMS
 INTERNATIONAL, INC.

'OMNIVISION' MODEL OV50
 THEATER SYSTEM

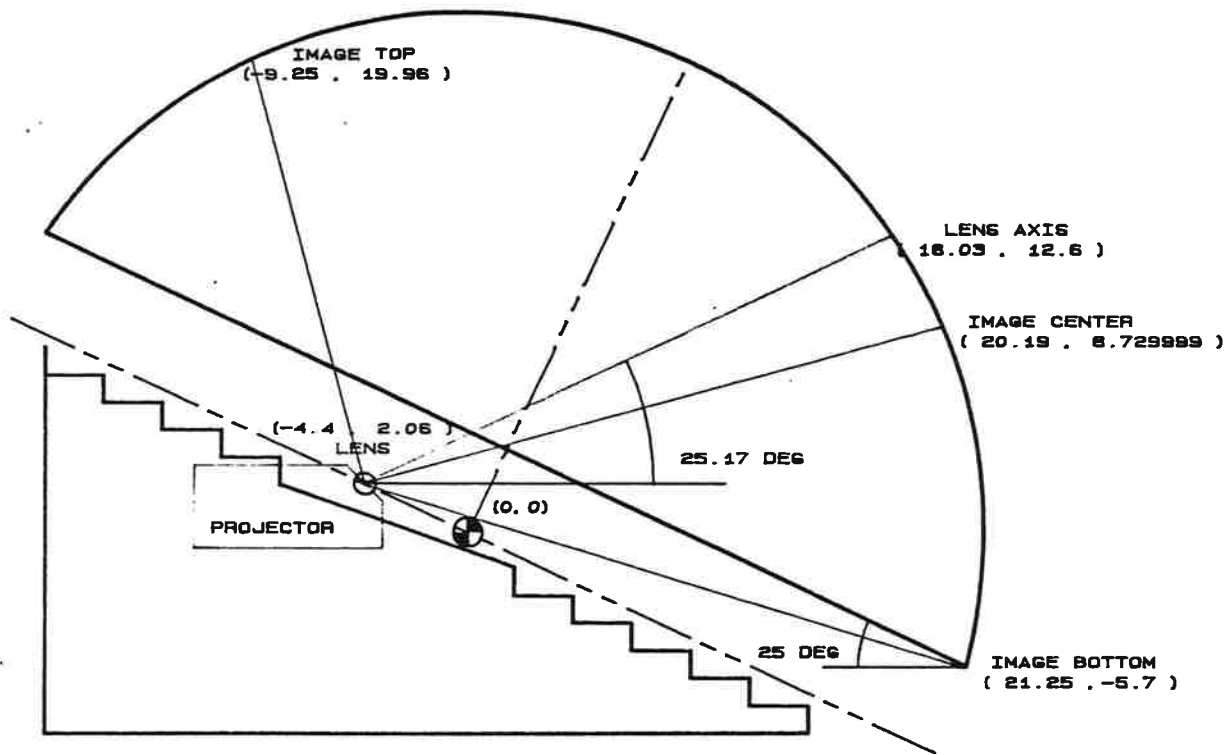
SCALE: 1/8"=1

DR. BY: HP150

DWG. -A0310

10-27-1987

Rev.: A



DOME DIAMETER= 43.33 FT.
 DOME RADIUS= 22 FT.
 LENS-TO-DOME DISTANCE= 3.81 FT.

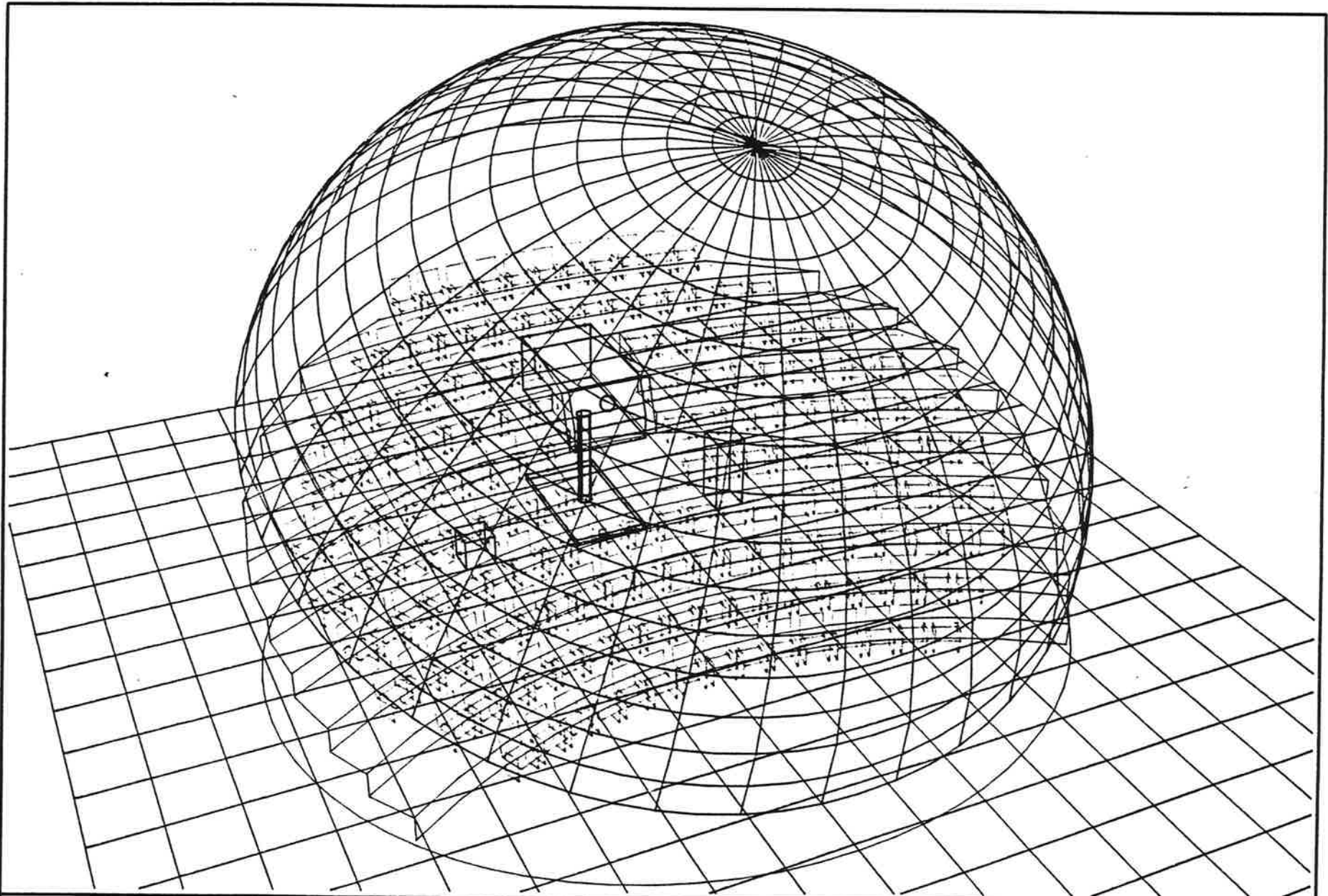
OMNI FILMS
 INTERNATIONAL, INC.

'OMNIVISION' MODEL OV44
 THEATER SYSTEM

SCALE: 1/8"=1
 DR. BY: HP150

DWG. -A0311

10-27-1987
 Rev.: A



**OMNI FILMS
INTERNATIONAL, INC.**

'OMNIVISION' THEATER SYSTEM
50' DOME / 25-DEGREE TILT

SCALE: NONE

DR. BY: HP150

DWG. -A00173

01-06-1987

Rev.: A